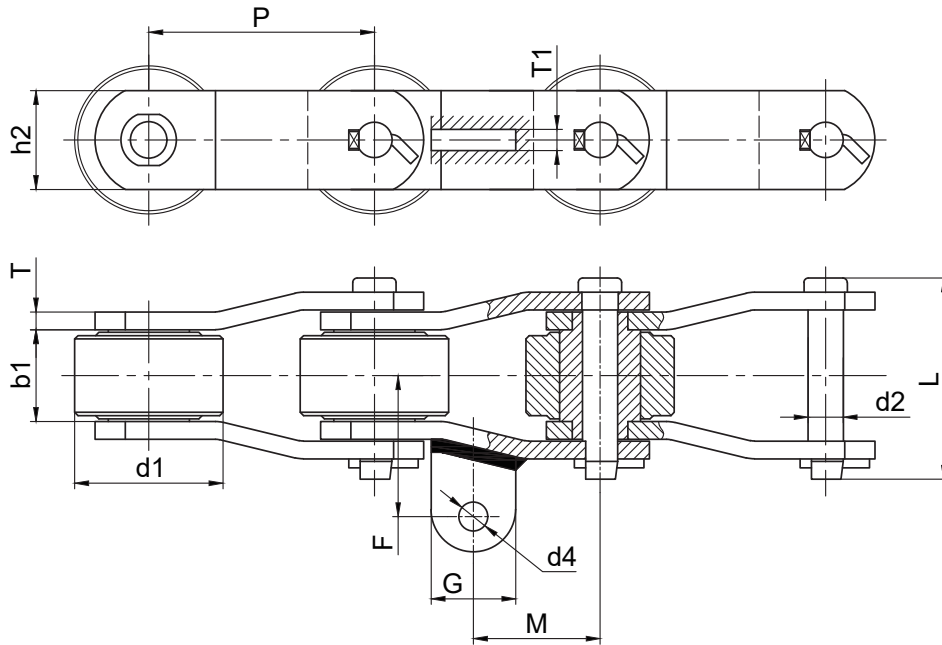


# 糖机链 Sugar Machine Chain



征和链号 CHOHO Chain No.	节距	内节内宽	滚子直径	销轴直径	销轴长度	链板高度	链板厚度	附板尺寸					抗拉强度
	Pitch	Width between inner plates	Roller diameter	Pin diameter	Pin length	Plate height	Plate thickness	Attachment dimensions					Ultimate Tensile Strength
	P	b1 min	d1 max	d2 max	L max	h2	T/t	F	G	M	d4	T1	Q min
	mm	mm	mm	mm	mm	mm	mm	mm	mm	mm	mm	mm	kN
TJP101.6V1-A1	101.60	41.30	*36.50	15.77	90.6	44.5	8.0	63.5	38.1	57.0	13.0	9.5	190.0
TJP101.6V2-A1	101.60	32.60	50.80	17.50	83.0	44.5	8.0	63.5	38.1	50.0	13.0	9.5	150.0
TJP152.4V1-A1	152.40	34.50	76.20	22.23	95.0	50.8	9.5	66.7	65.0	76.2	17.0	16.0	265.0
TJP203.2V1-A1	203.20	46.10	88.90	25.40	125.00	76.2	12.7	81.70	58.00	101.60	20.00	16.00	700.0

注: 带“\*”无滚子

输送带  
Conveyor Chains

曳引链  
Leaf Chains

传动链  
Driving Chains

键槽和螺纹  
Keyway And Thread

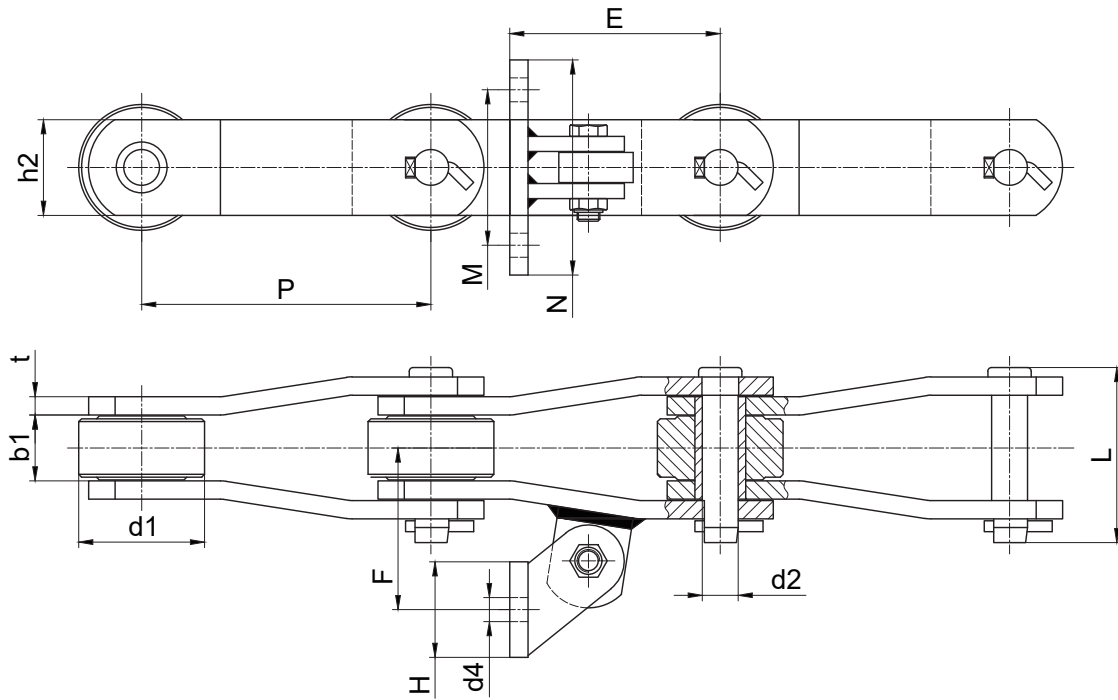
A系列滚子链轮  
Sprocket-A-Series

B系列滚子链轮  
Sprocket-B-Series

双节距链轮  
Double Pitch Sprocket

双驱动链轮  
Double-Drive Sprocket

同步带轮  
Synchronous Pulley



征和链号 CHOHO Chain No.	节距	内节内宽	滚子直径	销轴直径	销轴长度	链板高度	链板厚度	附板尺寸						抗拉强度
	Pitch	Width between inner plates	Roller diameter	Pin diameter	Pin length	Plate height	Plate thickness	Attachment dimensions						Ultimate Tensile Strength
	P	b1 min	d1 max	d2 max	L max	h2	T/t	M	N	E	F	d4	H	Q min
	mm	mm	mm	mm	mm	mm	mm	mm	mm	mm	mm	mm	mm	mm
TJP101.6V2-AS2	101.60	32.60	50.80	17.50	83.0	44.5	8.0	69.9	120.7	90.9	85.8	14.7	50.8	150.0
TJP152.4V1-AS2	152.40	34.50	76.20	22.23	95.0	50.8	9.5	88.9	127.0	143.0	92.1	14.2	50.8	265.0
TJP203.2V1-AS2	203.20	46.10	88.90	25.40	125.00	76.2	12.7	88.9	127.0	168.4	107.1	14.2	50.8	700.0

输送带  
Conveyor Chains

曳引链  
Leaf Chains

传动链  
Driving Chains

键槽和螺纹  
Keyway And Thread

A系列滚子链轮  
Sprocket - A Series

B系列滚子链轮  
Sprocket - B Series

双节距链轮  
Double Pitch Sprocket

双驱链轮  
Double-Drive Sprocket

同步带轮  
Synchronous Pulley