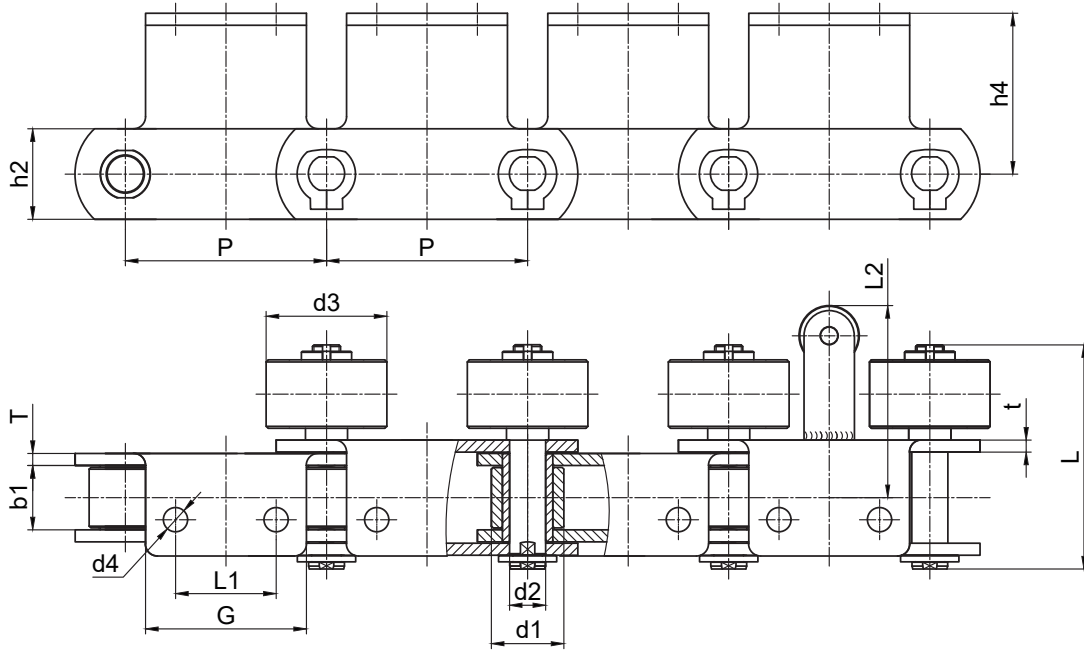


■ 焊装调整线链条 Solder Adjusting Wire Chain



征和链号 CHOHO Chain No.	节距	内节 内宽	滚子 直径	销轴 直径	销轴 长度	链板 高度	链板 厚度	附板尺寸						抗拉 强度
	Pitch	Width between inner plates	Roller diameter	Pin diameter	Pin length	Plate height	Plate thickness	Attachment dimensions						Ultimate tensile strength
	P	b1 min	d1 max	d2 max	L max	h2	T/t	L1	L2	G	d3	h4	d4	Q min
	mm	mm	mm	mm	mm	mm	mm	mm	mm	mm	mm	mm	mm	mm
QCP100A2SRV1	100.00	32.00	36.00	18.00	119.00	45.0	6.0	50.0	95.0	80.0	60.0	80.0	11.0	112.0
QCP100A2SRV2	100.00	32.00	36.00	18.00	111.50	45.0	6.0	50.0	95.0	80.0	60.0	80.0	12.0	112.0
QCP100A2SRV3	100.00	32.00	36.00	18.00	111.50	45.0	6.0	50.0	95.5	80.0	60.0	80.0	12.0	112.0

输送链  
Conveyor Chains

曳引链  
Leaf Chains

传动链  
Driving Chains

键槽和螺纹  
Keyway And Thread

A系列滚子链轮  
Sprocket-A Series

B系列滚子链轮  
Sprocket-B Series

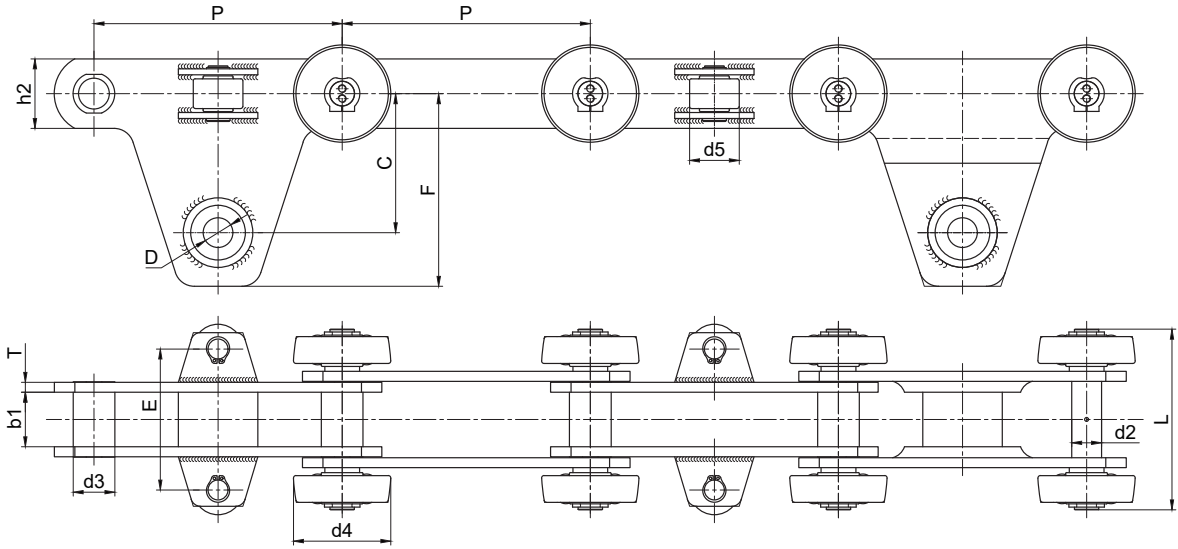
双节距链轮  
Double Pitch Sprocket

双驱链轮  
Double-Drive Sprocket

同步带轮  
Synchronous Pulley

## 汽车生产线链条 Automobile Production Chains

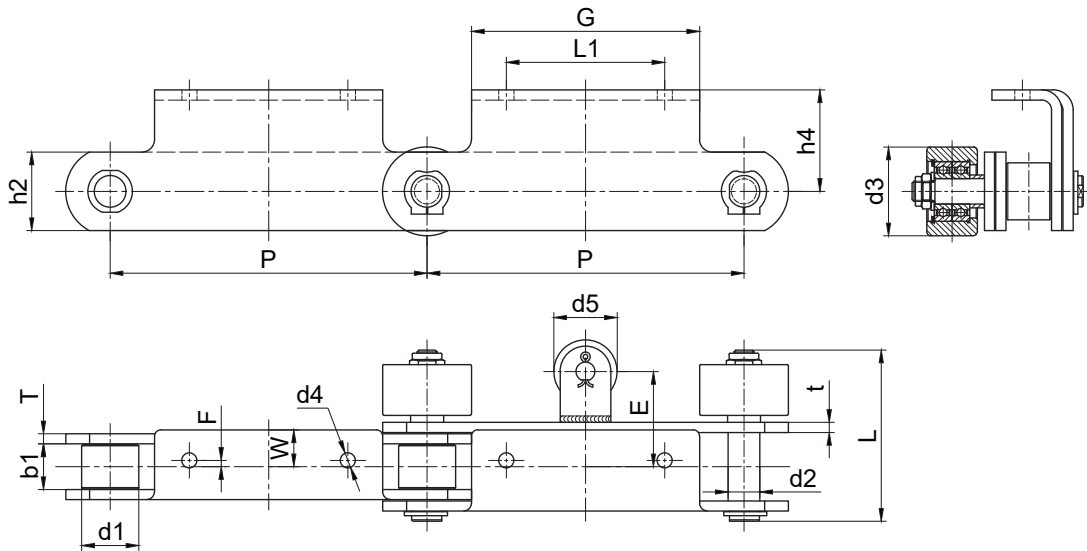
### 摆杆线链条 Swing Pole Chain



征和链号 CHOHO Chain No.	节距	内节 内宽	套筒 直径	销轴 直径	销轴 长度	链板高度	链板厚度	附板尺寸						抗拉 强度
	Pitch	Width between inner plates	Sleeve diameter	Pin diameter	Pin length	Plate height	Plate thickness	Attachment dimensions						Ultimate tensile strength
	P	b1 min	d3 max	d2 max	L max	h2	T/t	C	F	E	d4	d5	D	Q min
	mm	mm	mm	mm	mm	mm	mm	mm	mm	mm	mm	mm	mm	mm
BGP250V1	250.00	55.00	42.00	30.00	182.00	70.0	10.0	140.0	194.0	145.0	98.0	50.0	30.0	450.0
BGP250V2	250.00	50.00	42.00	30.00	180.00	70.0	10.0	140.0	194.0	137.0	98.0	55.0	30.0	450.0
BGP250V3	250.00	55.00	42.00	30.00	178.00	70.0	10.0	140.0	194.0	145.0	98.0	42.0	30.0	450.0

输送链  
Conveyor Chains曳引链  
Leaf Chains传动链  
Driving Chains键槽和螺纹  
Keyway And ThreadA系列滚子链轮  
Sprocket-A-SeriesB系列滚子链轮  
Sprocket-B-Series双节距链轮  
Double Pitch Sprocket双驱链轮  
Double-Drive Sprocket同步带轮  
Synchronous Pulley

## ■ 装配线链条 Assembly Line Chain



征和链号 CHOHO Chain No.	节距	内节 内宽	滚子 直径			销轴 直径	销轴 长度	链板 高度	链板 厚度	附板尺寸							抗拉 强度
	Pitch	Width between inner plates	Roller diameter			Pin diam- eter	Pin length	Plate height	Plate thick- ness	Attachment dimensions							Ultimate tensile strength
	P	b1 min	d1 max	d3 max	d5 max	d2 max	L max	h2	T/t	L1	G	F	W	E	d4	h4	Q min
	mm	mm	mm	mm	mm	mm	mm	mm	mm	mm	mm	mm	mm	mm	mm	mm	kN
QCP250A2SRV1	250.00	36.00	45.00	70.00	50.00	25.00	135.0	62.0	8.0	125.0	180.0	5.0	29.0	75.0	12.0	80.0	224.0
QCP250A2SRV2	250.00	36.00	43.00	65.00	50.00	21.00	135.0	60.0	8.0	140.0	190.0	11.0	29.0	76.0	11.0	80.0	224.0
QCP250A2SRV3	250.00	47.00	50.00	80.00	50.00	25.00	153.0	72.0	10.0	140.0	180.0	0.0	20.0	92.0	11.0	90.0	224.0

输送带  
Conveyor Chains

曳引链  
Leaf Chains

传动链  
Driving Chains

键槽和螺纹  
Keyway And Thread

A 系列滚子链轮  
Sprocket - A Series

B 系列滚子链轮  
Sprocket - B Series

双节距链轮  
Double Pitch Sprocket

双驱链轮  
Double-Drive Sprocket

同步带轮  
Synchronous Pulley