



征和官方微信



征和官网



征和官方抖音



1999年-至今
持续通过ISO9001
质量体系认证

CHOHO

行业首家A股上市公司

证券代码 003033



征和链系统技术领导者
Choho, Chain Transmission Technology Leader

制造厂商: 青岛征和工业股份有限公司
地址: 中国青岛平度市香港路112号
电话: 0532-83301783
<http://www.chohogroup.com/chain/>

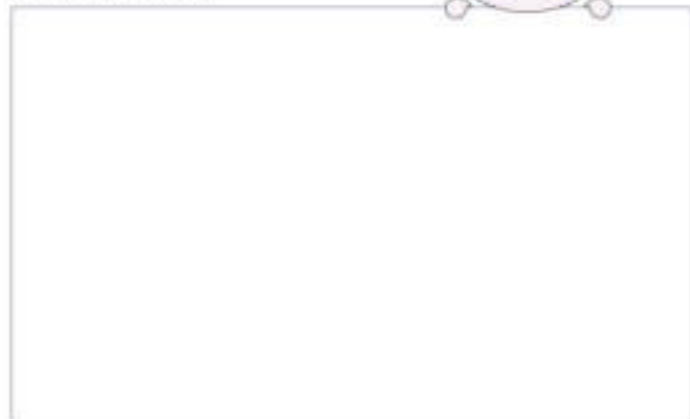
QINGDAO CHOHO INDUSTRIAL CO.,LTD.
Add: No.112 Hongkong Road, Pingdu, Qingdao City, 266700 China.
Tel / Fax: +86-0532-83301783 E-mail: info@chohogroup.com
<http://www.chohogroup.com/chain/>



印刷于中纸
Recycled Paper 2023-03-21

本媒体包含的数据源自公司 2023 年 03 月资料, 若有变动不再告知。请消费者谨慎参考, 其中图片是本公司部分产品, 并不代表所有产品, 所述产品的具体设计取决于制造商的需求和实际情况, 因此可能会与本媒体中的描述有所出入。

Your sales representative

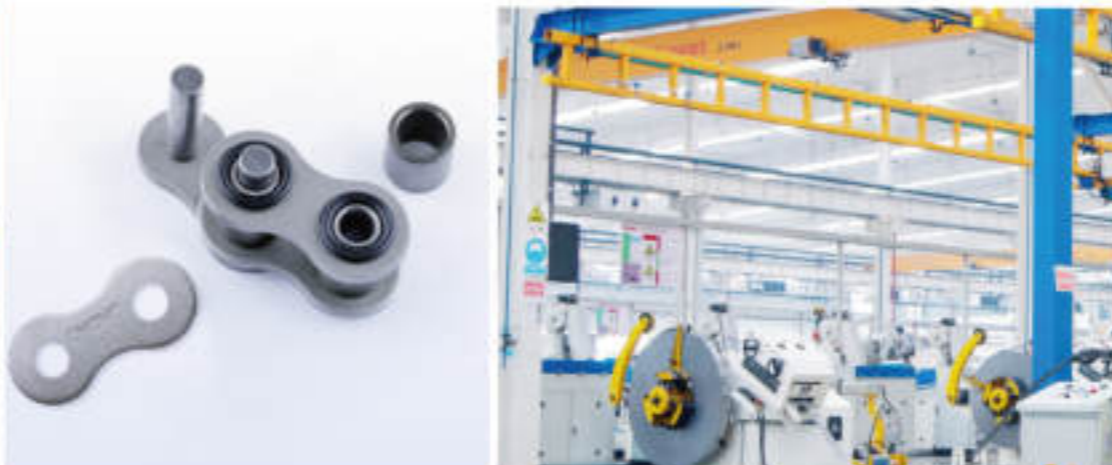


征和农机链条
CHOHO Agricultural Chain

征和农机链轮
CHOHO Agricultural Sprocket

征和耕耘部件
CHOHO Tillage Parts





青島征和工業股份有限公司
Qingdao CHOHO Industrial Co., Ltd

征和 - 链系统技术领导者

青島征和工業股份有限公司，創立于1987年。創建以來，公司從小到大，從弱到強，始終保持高速、健康的發展。目前，征和已成為中國鏈傳動行業首家A股上市公司，國家認定企業技術中心，國家技術創新示範企業，國家高新技術企業，國家製造業單項冠軍示範企業和國家工信部專精特新“小巨人”企業。在農業機械鏈系統、工業自動化鏈傳動系統、發動機鏈系統、車輛鏈系統等領域，征和已成為行業領軍企業。截至2023年，征和农机链系统产品为CLAAS、潍柴雷沃、爱科、迪尔、巨明、金大丰、英虎等上百家知名厂家配套；车辆链系统已为本田、铃木、雅马哈、宝马、大长江、比亚乔、本田技研、吉利、比亚迪和江铃福特等五十多家企业提供产品和技术服务；工业链系统为沈飞、昆船、青島軟控、海爾、中通等行業知名廠家配套。

目前，征和公司主导产品已达国际先进水平，承担多项国家级重大科研项目，并制修订了24项国家或行业标准，获得220余项国家发明和新型专利，为行业的技术进步起到了引领和指导作用。

CHOHO, Chain Transmission Technology Leader

Qingdao CHOHO Industrial Co., Ltd., was founded in 1987. Since its establishment, the company has grown from small to large, weak to vigorous, and has maintained high-speed healthy development. At present, CHOHO has become the first A-share listed company in the Chinese chain transmission industry, the national certified enterprise technology center, the national technology innovation demonstration enterprise, the national high-tech enterprise, the national manufacturing individual champion demonstration enterprise, and the Ministry of Industry and Information Technology recognized new, specialized "Little Giant" enterprises. CHOHO has become the industry leader in agricultural machinery chain systems, industrial automation chain systems, engine chain systems, vehicle chain systems and other fields. Till 2023, CHOHO's agricultural machinery chain system products have supported over 100 well-known manufacturers such as CLAAS, LOVOL, AGCO, DEERE, GIMIG, GOLDDAFENG, YHMAC, and many others. The vehicle chain system has provided products and technical services to more than 50 enterprises, including Honda, Suzuki, Yamaha, BMW, Dachangjiang, Piaggio, Honda Technology Research, Geely, BYD, and Jiangling Ford. The industrial chain system supports well-known manufacturers in AVIC, KSEC, MESNAC, Haier, ZTO, and others.

Now, CHOHO's leading product has advanced international level. CHOHO is responsible for several nationally significant research and development projects, has amended 24 national or industrial standard, and obtained more than 220 national invention and new model patents. CHOHO has performed the role of leading and instructing in the technology development of this industry.



2017年獲得行業首批國家技術創新示範企業
2017 The First Batch of National Technology Innovation Demonstration Enterprise



2021年獲得國家製造業單項冠軍示範企業
2021 The National Manufacturing Individual Champion Demonstration Enterprise

榮譽
Honor

- 國家認定企業技術中心
- 國家技術創新示範企業
- 國家高新技術企業
- 國家製造業單項冠軍示範企業
- 國家工信部專精特新“小巨人”企業
- 首屆中國機械工業優質品牌
- 山東省工程研究中心
- 首屆青島市市長質量獎
- CMCA 鏈傳動分會理事單位
- 中國農業機械零部件（鏈條）龍頭企業
- 中國鏈傳動行業重點出口基地

- The National Certified Enterprise Technology Center
- The National Technology Innovation Demonstration Enterprise
- The National High-tech Enterprise
- The National Manufacturing Individual Champion Demonstration Enterprise
- The Ministry of Industry and Information Technology Recognized New, Specialized "Little Giant" Enterprises
- First-session China Machinery Industry Excellent Brand
- Shandong Engineering Research Center
- First-session Qingdao Mayor Quality Award
- CMCA Chain Drive Branch President Enterprise
- China Agricultural Machinery Industry Association Components Leading Enterprises
- The Key Export Base of Chain Drive Industry in China

- 1999年，通過法國BVQI ISO9002質量體系認證
- 2003年，通過挪威DNV ISO9001質量體系認證
- 2007年，通過TS16949質量管理體系認證
- 2009-2015年，通過德國TUV萊茵ISO9001:2008質量體系認證
- 2009-2018年，通過德國TUV萊茵TS16949:2009質量體系認證
- 2015年，通過山東世通ISO9001:2008質量體系認證
- 2018年，通過山東世通ISO9001:2015質量體系認證
- 2018年，通過德國TUV萊茵IATF16949:2016質量體系認證
- 2018年，獲得CNAS實驗室認可證書
- 2021年，通過德國TUV萊茵ISO9001:2015質量體系認證
- 2022年，通過ISO14001:2015環境管理體系認證
- 2022年，通過ISO45001:2018職業健康安全管理体系认证
- 2023年，通過山東世通產品碳足跡認證

- 1999, passed the French BVQI ISO9002 quality management system certification
- 2003, passed the Norwegian DNV ISO9001 quality management system certification
- 2007, passed TS16949 quality management system certification
- 2009-2015, passed the German TUV Rhine ISO9001:2008 quality certification
- 2009-2018, passed the German TUV Rhine TS16949:2009 quality certification
- 2015, passed the Shandong Shitong ISO9001:2008 quality system certification
- 2018, passed the Shandong Shitong ISO9001:2015 quality system certification
- 2018, passed the TUV Rhine IATF16949:2016 quality management certification
- 2018, obtained CNAS laboratory accreditation certificate
- 2021, passed the TUV Rhine ISO9001:2015 quality management system certification
- 2022, passed ISO14001:2015 Environmental management system certification
- 2022, passed the ISO45001:2018 Occupational Health and safety certification
- 2023, passed the Shandong Shitong product carbon footprint certification

产品应用-链轮 Product Application - Sprockets



工艺划分 Division by Process



锥键槽链轮
Cone Keyway Sprocket



双节距链轮
Double Pitch Sprocket



铸造链轮
Casting Sprocket



焊接链轮
Welding Sprocket



同步带轮
Synchronous Pulley



精锻链轮
Precision Forging Sprocket

更多产品信息可查阅《农机链轮手册》
More product information can be found in CHDHO "Agricultural Sprocket Manual"

产品应用-耕耘部件 Product Application - Tillage Parts



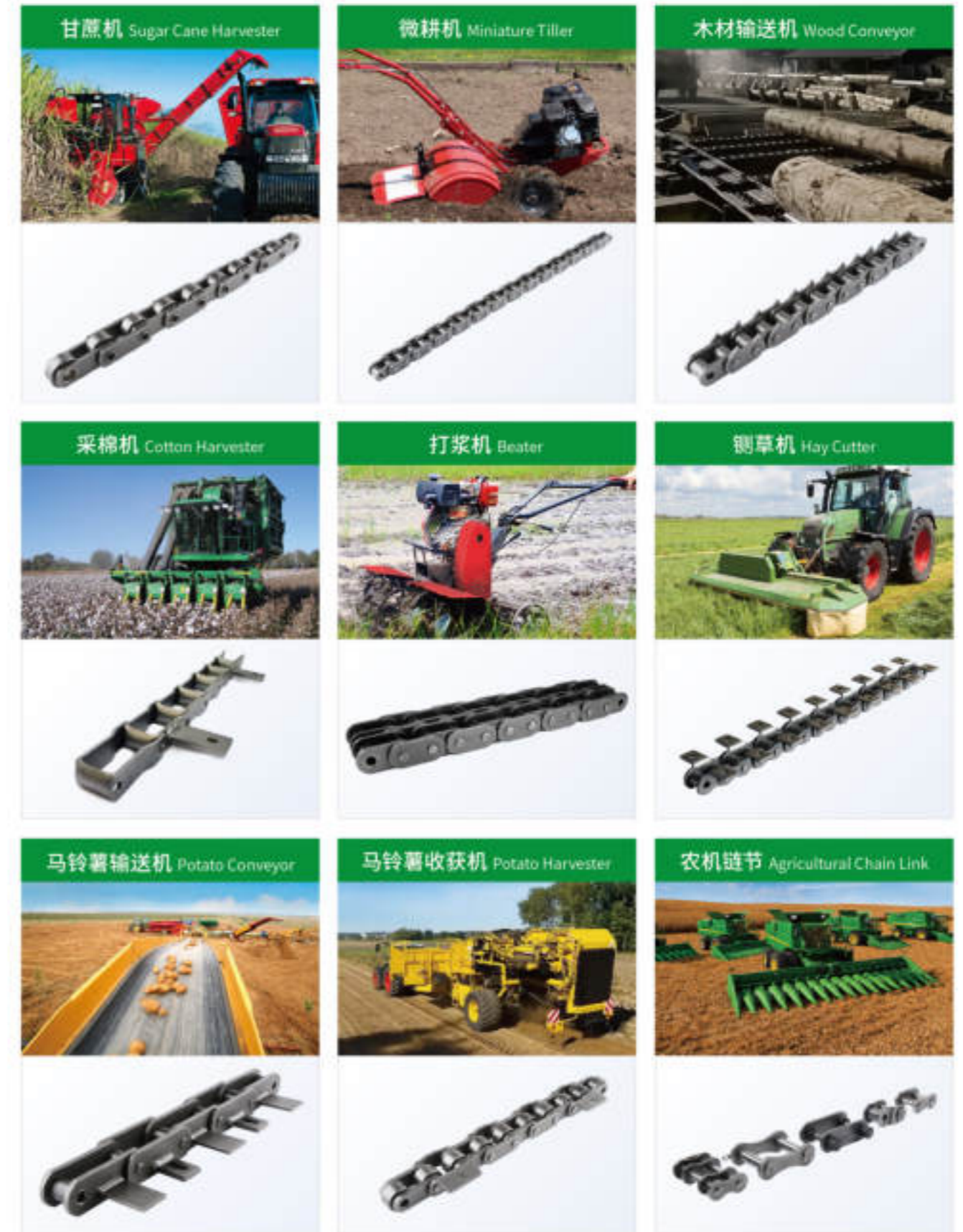
更多产品信息可查阅《耕耘部件手册》
More product information can be found in CHDHO "Tillage Parts Manual"

产品应用-链条 Product Application - Chains



更多链条信息可查阅征和《农机链条手册》
More product information can be found in CHOH "Agricultural Chain Manual"

产品应用-链条 Product Application - Chains



更多链条信息可查阅征和《农机链条手册》
More product information can be found in CHOH "Agricultural Chain Manual"